

A. VIVALDI

Piano

Concert pentru orchestra
de coarde si cembalo in sol minor

Allegro



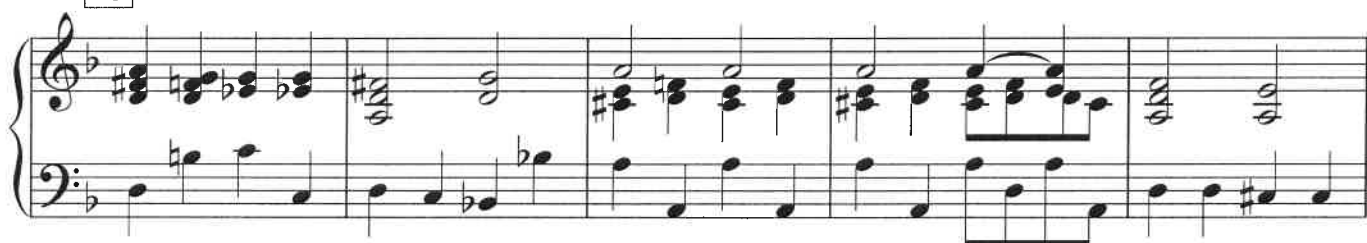
5



10



15



20



25



30



35



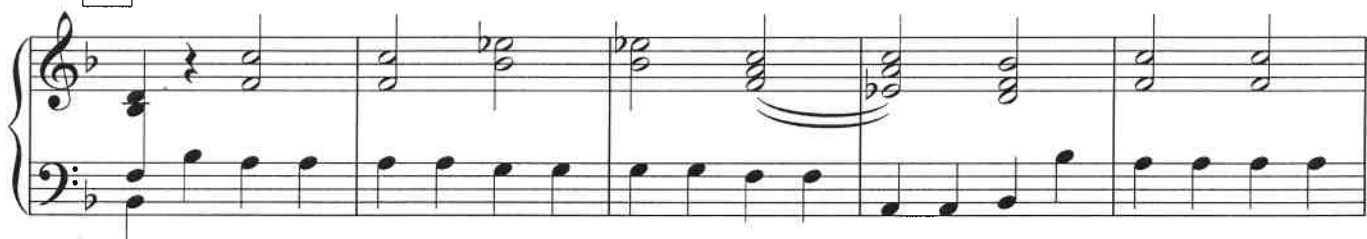
40



45



50



55



60



65



70



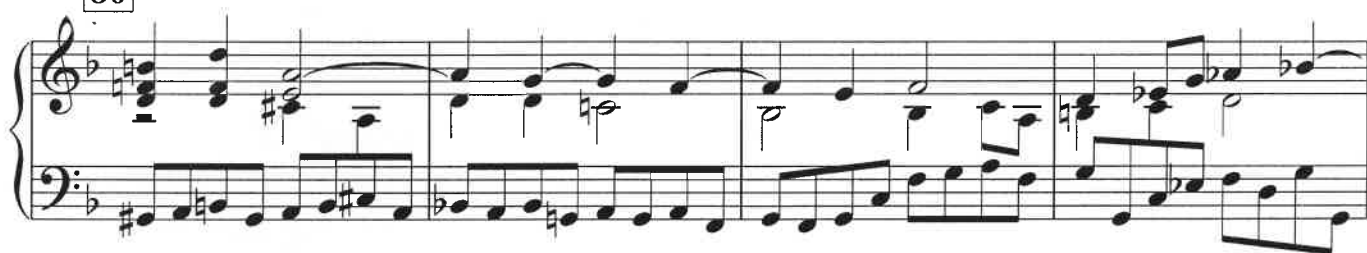
75



Adagio



80



85



90



Allegro

Measures 1-5 of the piece. The tempo is marked 'Allegro'. The time signature is 3/8. The key signature has one flat (B-flat). The first staff (treble clef) has a '4' above it. The second staff (bass clef) has a '4' above it. The first measure of the bass staff is marked with a forte 'f' dynamic. The piece begins with a whole rest in the treble and a four-measure rest in the bass, followed by a series of chords and eighth-note patterns.

Measures 100-105. Measure 100 is marked with a box containing '100'. Measure 105 is marked with a box containing '105'. The music continues with chords in the treble and eighth-note patterns in the bass.

Measures 110-115. Measure 110 is marked with a box containing '110'. Measure 115 is marked with a box containing '115'. The music continues with chords in the treble and eighth-note patterns in the bass.

Measures 120-125. Measure 120 is marked with a box containing '120'. Measure 125 is marked with a box containing '125'. The music continues with chords in the treble and eighth-note patterns in the bass.

Measures 130-135. Measure 130 is marked with a box containing '130'. Measure 135 is marked with a box containing '135'. The music continues with chords in the treble and eighth-note patterns in the bass.

Measures 130-135. Measure 130 is marked with a box containing '130'. Measure 135 is marked with a box containing '135'. The music continues with chords in the treble and eighth-note patterns in the bass.

140

145



150



155

160



165

170



175

180



185

