

Vocal

3/13

Handwritten signature

Orchestra 3
CONSTANTA 430

V. Cello / ~~Bass~~

PULT

Two Flute Concerto

Domenico Cimarosa
(1749 - 1801)

66522



Cello / Bass

Allegro

(1749 ~ 1801)

Handwritten musical score for Cello/Bass, Allegro. The score is written on ten staves, each containing measures 1 through 48. The key signature is one sharp (F#) and the time signature is common time (C). The score includes various musical notations such as notes, rests, and dynamic markings.

Measures 1-8: *mf* (mezzo-forte). Measure 2 has a '2' above it. Measure 8 has a '1' above it.

Measures 9-13: *ten* (tension). Measure 9 has a '9' above it. Measure 13 has a 'p' (piano) below it.

Measures 14-17: *f* (forte). Measure 14 has a '14' above it.

Measures 18-21: Measure 18 has an '18' above it. Measure 21 has a '4' above it.

Measures 22-28: *mf* (mezzo-forte). Measure 22 has a '22' above it. Measure 28 has a '28' above it.

Measures 29-32: *mf* (mezzo-forte). Measure 29 has a '29' above it. Measure 32 has a '32' above it.

Measures 33-36: *ten* (tension). Measure 33 has a '33' above it. Measure 36 has a '36' above it.

Measures 37-43: *f* (forte). Measure 37 has a '37' above it. Measure 43 has a '43' above it.

Measures 44-47: *b* (basso). Measure 44 has a '44' above it. Measure 47 has a '47' above it.

Measure 48: *b* (basso). Measure 48 has a '48' above it.

52

56

60

64

68

72

76

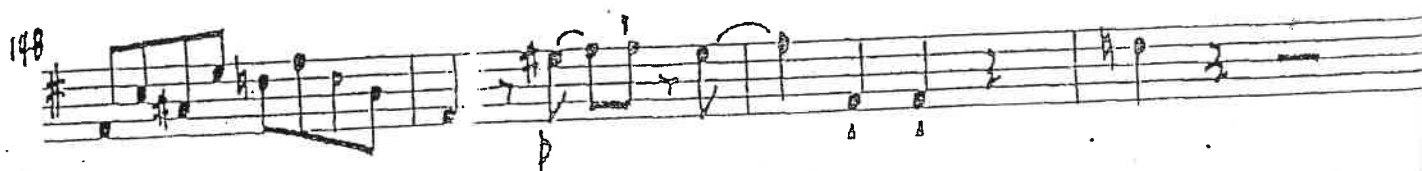
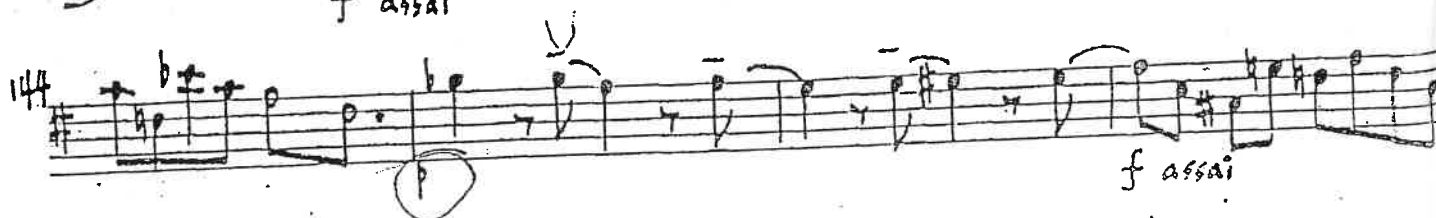
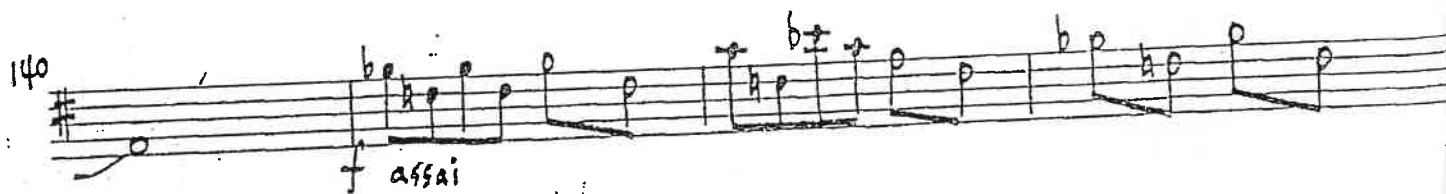
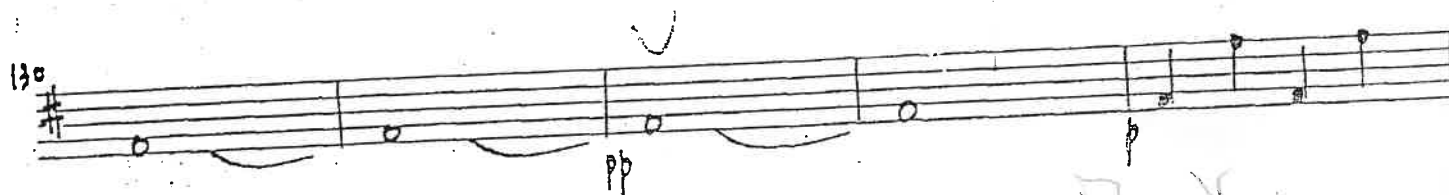
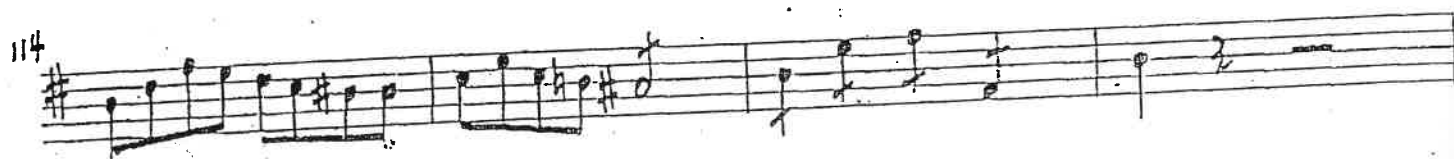
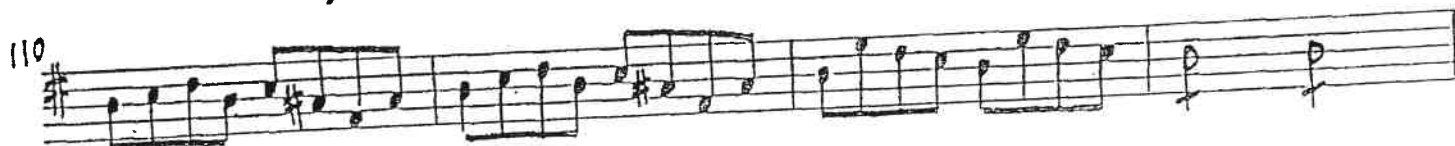
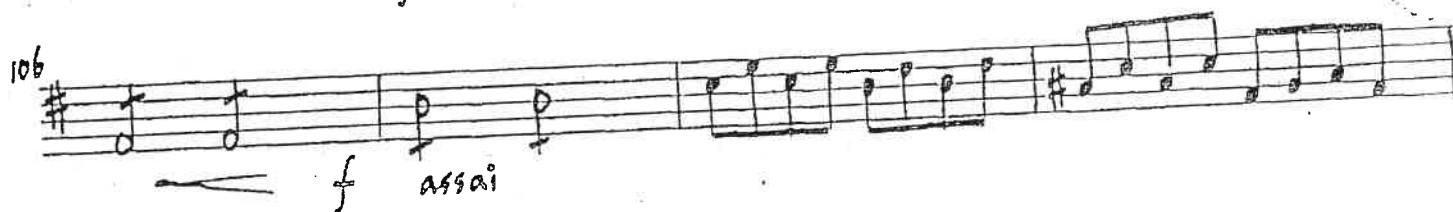
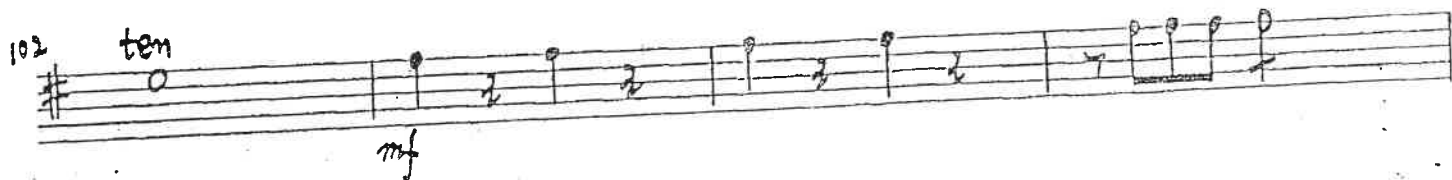
80

84

88

92

96



152

2

157 *ten*

p *f* *assai*

162

p *f* *pp*

166

170

fp *fp* *fp* *fp*

174

fp *fp* *fp* *fp*

178

fp *fp* *mf* *f* *assai*

182

v.s.

Empty musical staff

Empty musical staff

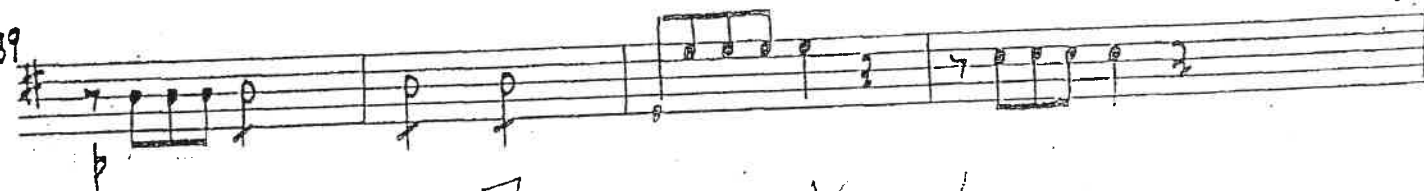
Empty musical staff

5.

185



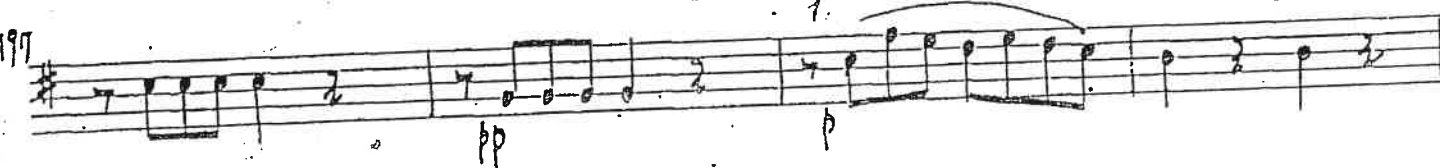
189



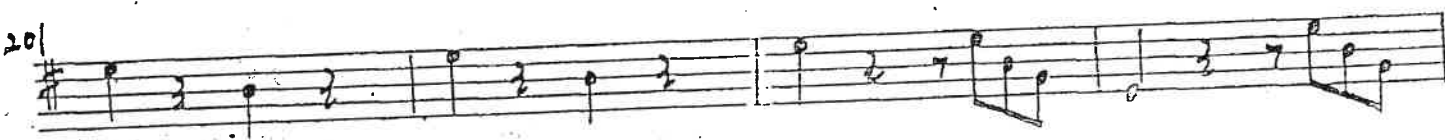
193



197



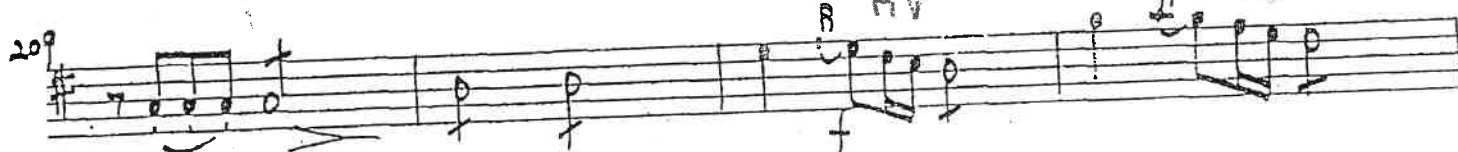
201



205



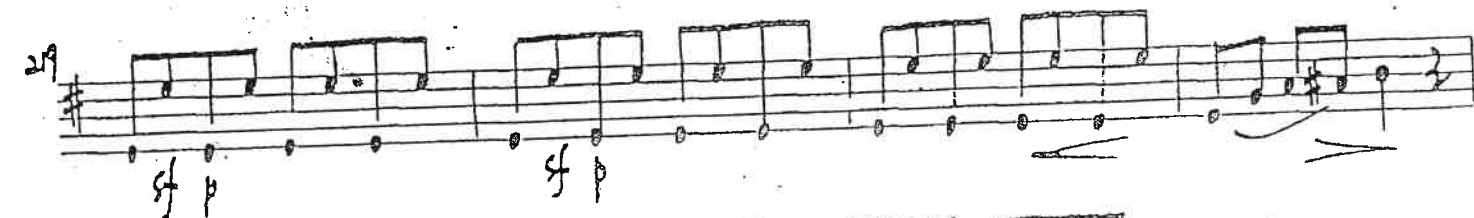
209



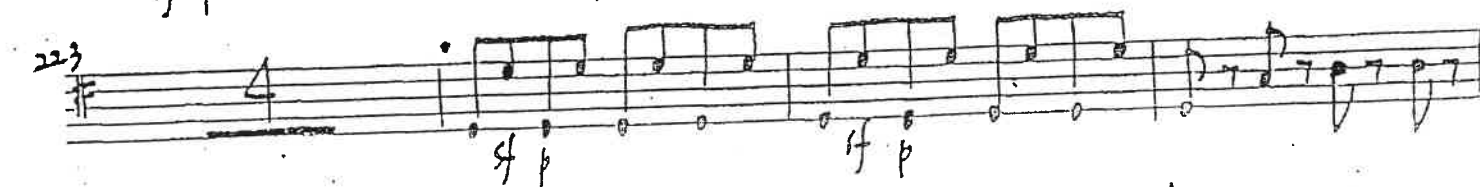
213



219

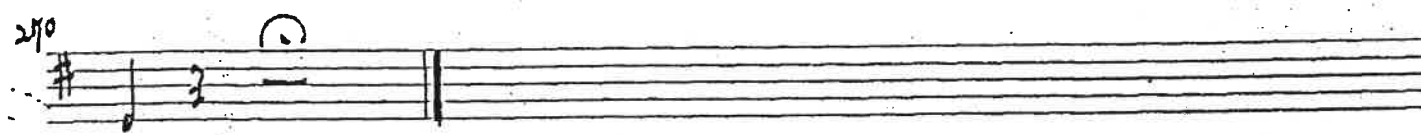
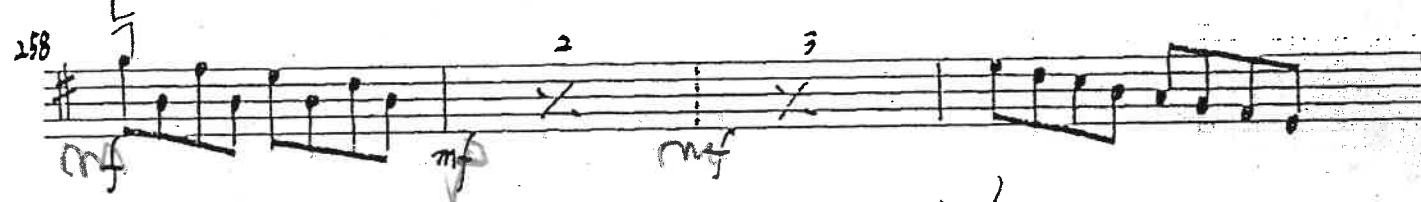
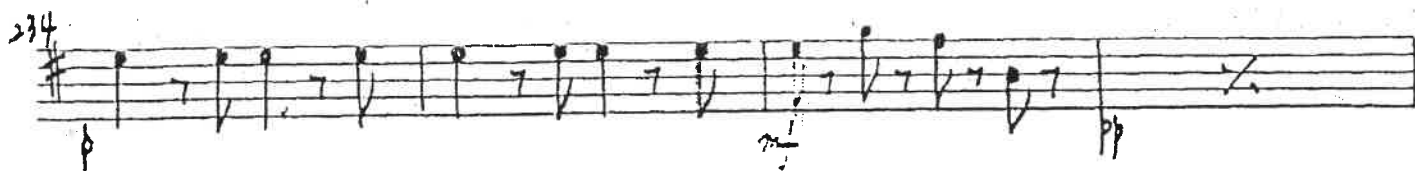


223



230





Largo

II

Handwritten musical score for a single staff, likely a cello or double bass, in 2/4 time. The key signature is B-flat major (two flats). The score is divided into measures, with measure numbers 12, 17, 24, 30, 36, 41, 46, 51, and 56 marked on the left. The tempo is marked "Largo" at the beginning. The score includes various musical notations such as notes, rests, and dynamic markings (p, f, fp, sf, cresc, poco rit, a tempo). There are also performance instructions like "arco" (bowed) and "pizz" (pizzicato). The score is heavily annotated with handwritten marks, including checkmarks, arrows, and symbols, suggesting a rehearsal or editing process. The final measure (56) includes the instruction "attacca il Rondo" and a key signature change to C major (one sharp).

Measures and markings:

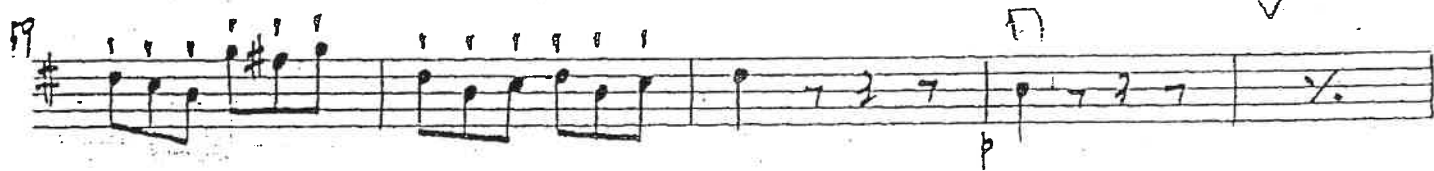
- Measure 12: *arco*, *pizz*
- Measure 17: *arco*, *fp*
- Measure 24: *fp*, *sf > p*
- Measure 30: *fp*, *f*, *p*
- Measure 36: *p*, *cresc*, *sf*, *poco rit*, *a tempo*
- Measure 41: *p*, *f*, *p*, *pizz*
- Measure 46: *arco*, *f*
- Measure 51: *fp*
- Measure 56: *attacca il Rondo*

Allegretto ma non tanto

Handwritten musical score for the piece "Pineapple" by John Williams. The score is written on ten staves. The first staff is a piano introduction in bass clef, marked with a 6/8 time signature and a key signature of one sharp (F#). It features a series of half notes and quarter notes, with a final half note on a whole rest. The subsequent staves are in treble clef and contain the main melody. The melody is characterized by a series of eighth and sixteenth notes, often beamed together, and includes various dynamic markings such as *p* (piano), *f* (forte), and *pp* (pianissimo). The piece concludes with a final staff marked "V.S." (Vincenzo Scarlatti).

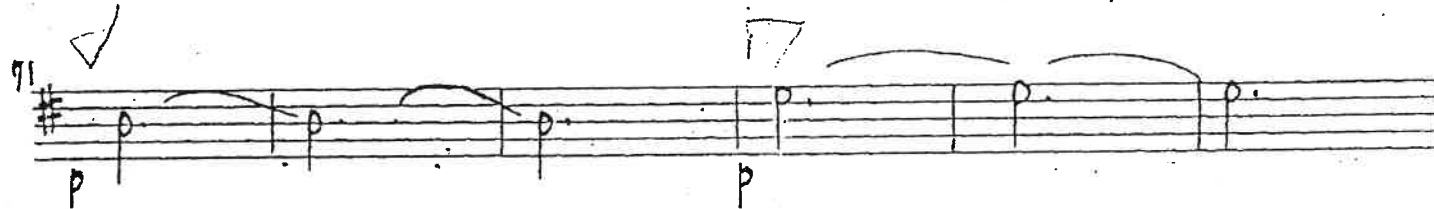
1.

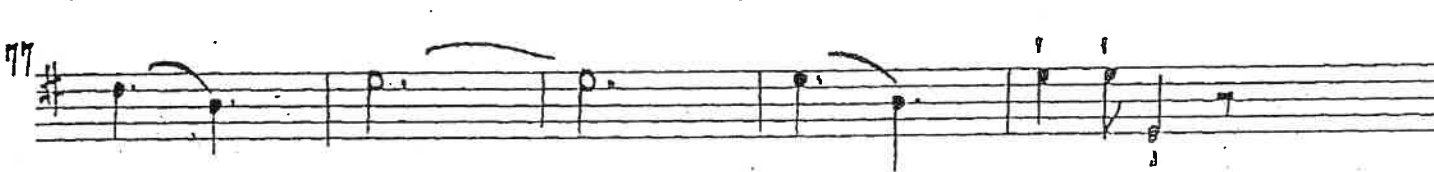
55 

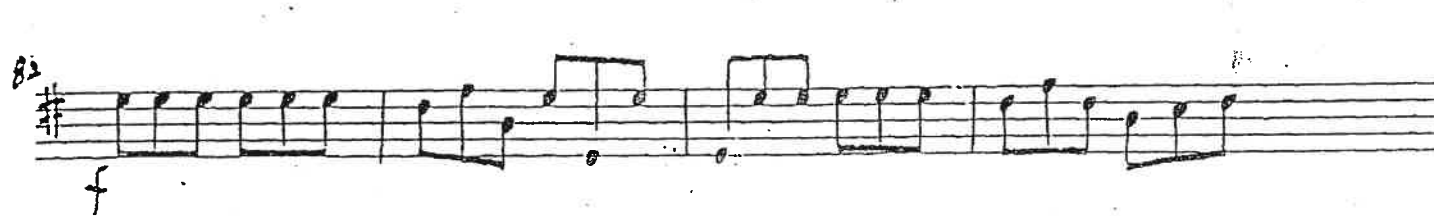
59 

64 

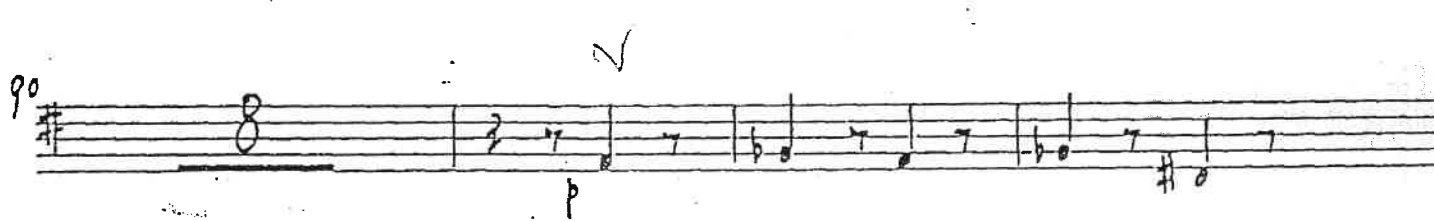
69 

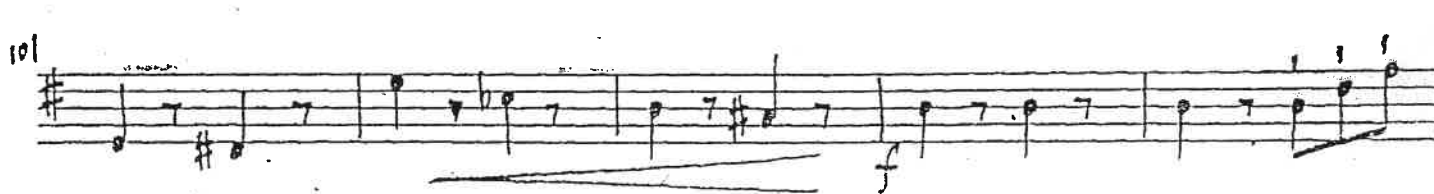
71 

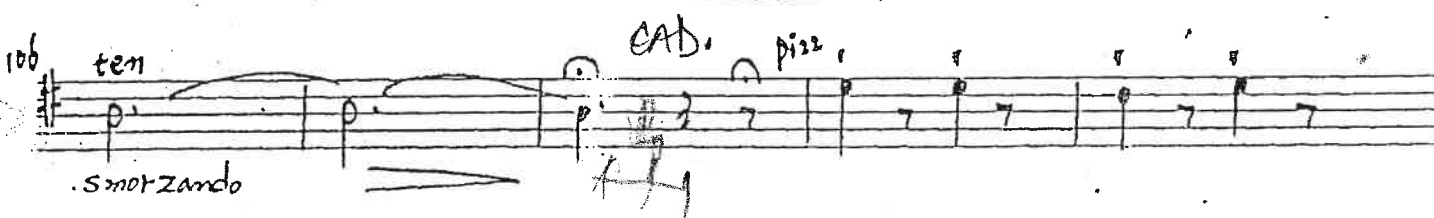
77 

82 

86 

90 

101 

106 

Handwritten musical score, measures 111 to 144. The notation includes various musical symbols such as notes, rests, and dynamic markings.

Measures 111-115: *arco* marking above the staff.

Measure 116: *f* (forte) dynamic marking.

Measures 121-125: *legato* marking above the staff.

Measure 129: *pp* (pianissimo) dynamic marking.

Measure 133: *f* (forte) dynamic marking.

Measure 137: *fp* (fortissimo) and *sciolte* (loose) marking.

Measure 140: *f* (forte) dynamic marking.

Measure 144: *f* (forte) dynamic marking.

Empty musical staves at the bottom of the page.