

Violin I

"Rigoletto" Fantasie for two flutes and Orchestra

Franz Doppler
Karl Doppler

Allegro assai moderato

8

pp

12

17

p dolce

22

pp

27

32

sfz *p* *pp* *poco più*

37

sfz *pp*

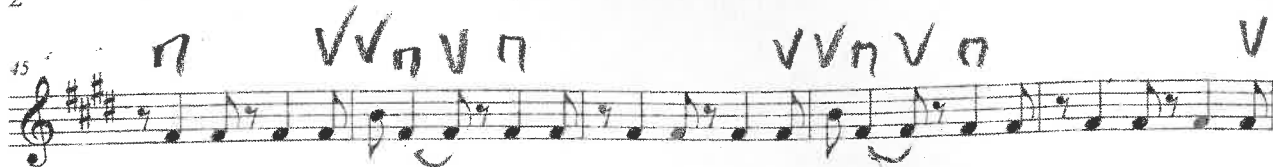
41

poco meno *pp*

"Rigoletto"
Violin I

2

45



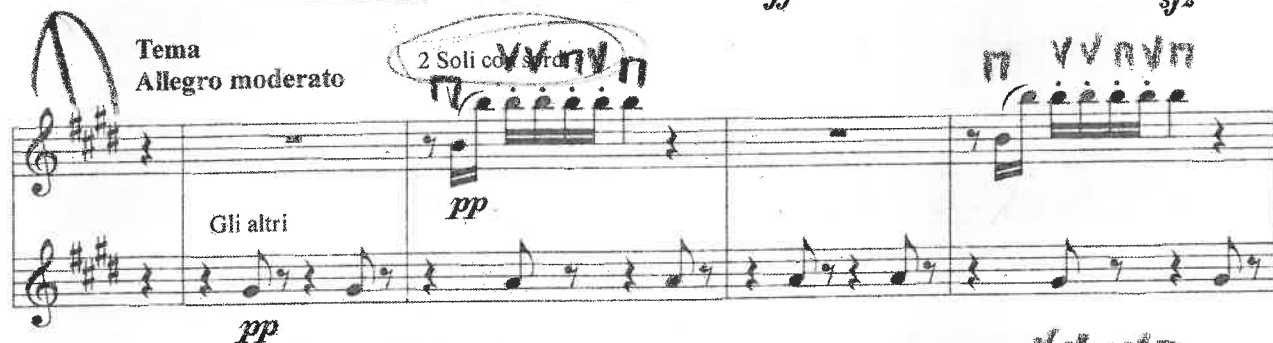
50



53



61



65



65



"Rigoletto"
Violin I

3

70 *Soli con sord.*

3

76 *Tutti, (senza sord.)*

f

sfz

Variation

pp

85

sfz *pp*

90

poco sfz *a tempo*

pp

Cadenza

95

f *f*

3

102

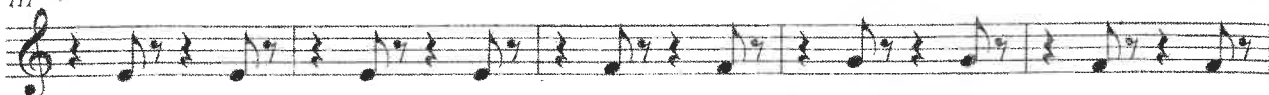
107 *poco rall.* *pizz.*

p *pp*

molto andante

"Rigoletto"
Violin I

111



116



121



126



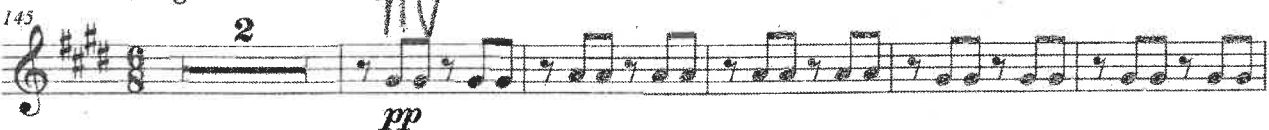
131



136



145



152



158



"Rigoletto"
Violin I

5

164 *più allegro*

sfz *pp*

171

177 *pp*

183 *acc.* *ff* *pp* *poco più mosso*

189 *sfz* *pp* *f*

196 *sfz* *ff* *f*

202 *Presto* *mf* *ff* *sfz*

Violin II

"Rigoletto" Fantasie
for two flutes and Orchestra

Franz Doppler
Karl Doppler

Allegro assai moderato

8

pp

12

17

p dolce

22

pp

27

32

sfz *p* *pp* *poco più*

37

sfz *pp* *poco meno*

41

pp

45

"Rigoletto"
Violin II

2

50 *Allegro*

54 *Cadenza* *ff* *sfz* *pp* *Tema Allegro moderato*

58

63

68

73 *f* *3*

80 *Variation* *pp* *sfz*

85 *sfz* *pp*

90 *Cadenza* *a tempo* *pp* *poco sfz*

"Rigoletto"
Violin II

3

95 *f* *3*

102 *f*

107 *poco rall.* *pizz.* *p* *Molto andante* *pp*

111

116

121 *poco riten.* *arco* *a tempo* *pizz.*

126

131 *arco* *Allegro* *ppp* *morendo* *f* *3/4*

137 *Allegretto* *5* *2*

147 *pp*

This is a page of a musical score for Violin II from the opera "Rigoletto". The page contains ten staves of music, numbered 95 to 147. The key signature is two sharps (F# and C#). The score includes various musical notations such as notes, rests, and dynamic markings. Handwritten annotations in blue ink are present throughout the score, including "DV", "pizz.", "arco", "morendo", and "Molto andante". The tempo markings "Allegro" and "Allegretto" are also visible. The page number "3" is in the top right corner.

"Rigoletto"
Violin II

153 *sfz pp*

159 *pp* *f* *più allegro*

165 *sfz* *pp*

172

178 *pp* *poco più mosso*

184 *ff* *mf*

190 *sfz* *pp* *f*

197 *sfz* *ff* *sfz*

203 *Presto* *mf* *ff*

PI
Viola

"Rigoletto" Fantasie for two flutes and Orchestra

Franz Doppler
Karl Doppler

Allegro assai moderato

8

pp

13

18

p

pp

25

30

poco più

sfz

p

pp

35

39

43

sfz

pp

poco meno

pp

47

2

"Rigoletto"
Viola

Allegro

Cadenza

51

ff

3

Tema
Allegro moderato

55

ff

sfz

pp

59

64

69

3

76

f

f

Variation

pp

85

sfz

pp

Cadenza

a tempo

90

poco sfz

pp

95

3

f

f

"Rigoletto"
Viola

3

103 *poco rall.* *pizz.* *p*

108 *Molto andante* *pp*

113

118 *poco riten.* *arco* *a tempo* *pizz.*

123

128 *arco* *Allegro* *ppp* *morendo* *f*

134

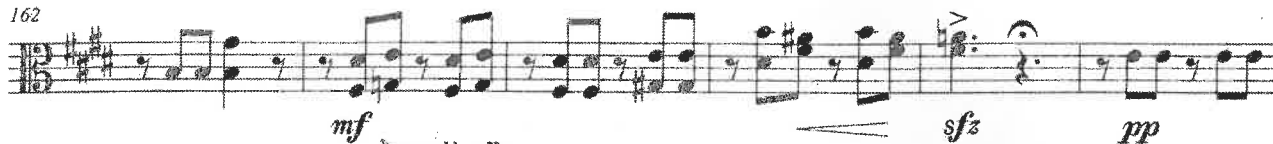
139 *Allegretto* *pp*

150

156 *sfz pp* *pp*

"Rigoletto"
Viola

162



168



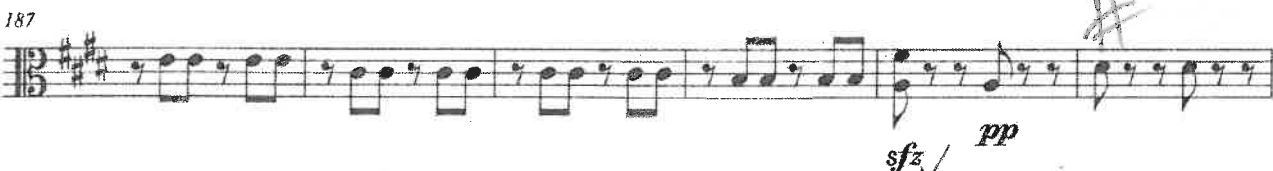
175



181



187



193



200



Cello

"Rigoletto" Fantasie for two flutes and Orchestra

Franz Doppler
Karl Doppler

Allegro assai moderato

8

Handwritten musical score for Cello, featuring various dynamics and performance markings. The score is written on a single staff with a key signature of one sharp (F#) and a common time signature (C). The tempo is marked "Allegro assai moderato".

Measure numbers and dynamics:

- Measure 12: *pp* *mf* *pp*
- Measure 17: *pizz.*
- Measure 22: *p* *arco*
- Measure 27: *pp* *mf* *pp*
- Measure 32: *poco più* *sfz* *p* *pp*
- Measure 37: *sfz* *pp*
- Measure 41: *poco meno* *pizz.* *pp*

Handwritten markings include slurs, accents, and dynamic changes throughout the piece.

"Rigoletto"
Cello

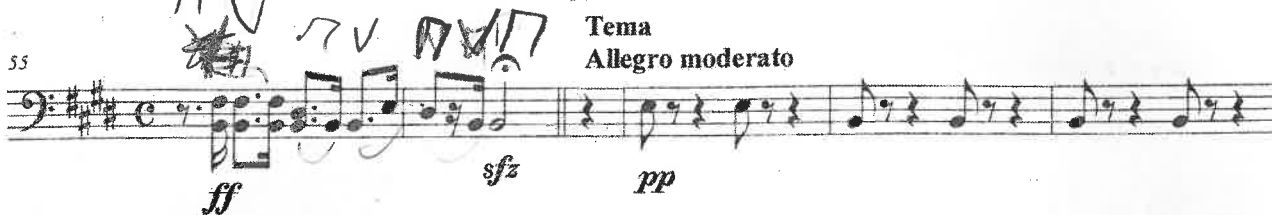
45



50



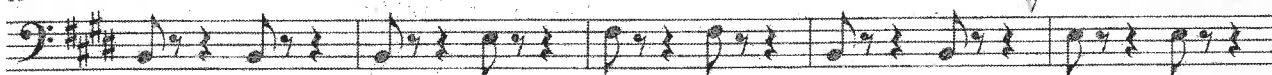
55



60



65



70



77



82



87



"Rigoletto"
Cello

3

92 *poco sfz* *Cadenza* *a tempo* *pp* *f*

97 *f* *poco rall.* *pizz.* *p*

105 *pizz.* *p* *Molto andante* *pp*

110

115

120 *poco riten.* *arco* *a tempo* *pizz.*

125

130 *arco* *Allegro in 2* *ppp* *morendo* *f* *f*

136 *f* *5*

"Rigoletto"
Cello

4

Allegretto

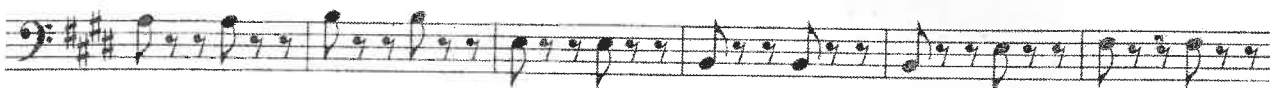
145

2



pp

152



158



sfzpp

pp

f
più allegro

165



sfz

pp

172



RE#

178

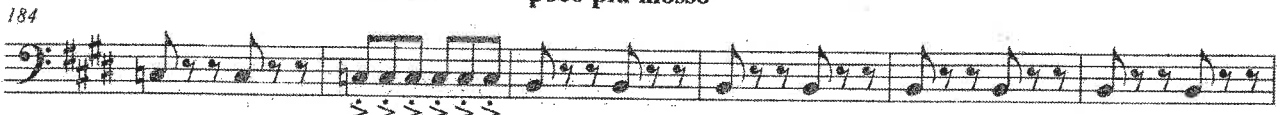


accel.

pp

poco più mosso

184



> > > > > >

pp

190



sfz

pp

f

197



sfz

Presto

ff

sfz

203



mf

ff

Double Bass

"Rigoletto" Fantasie for two flutes and Orchestra

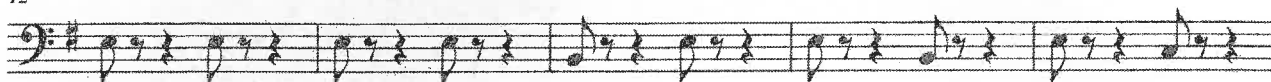
Franz Doppler
Karl Doppler

Allegro assai moderato

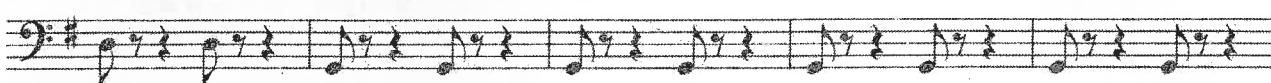
8



12

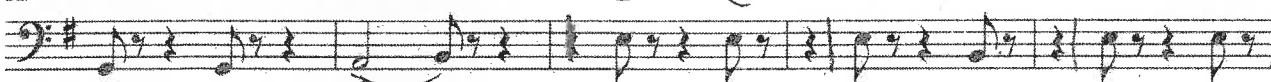


17



p

22



pp

27



32



poco più

sfz

p

pp

37



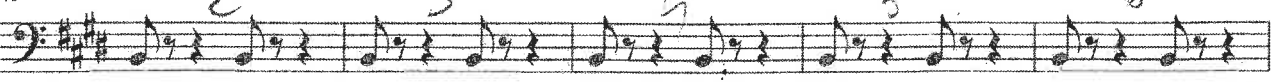
sfz
poco meno
pizz.

41



pp

45



2

"Rigoletto"
Double Bass

Allegro

Cadenza

50



55



59



64



69



76



85



90



95



"Rigoletto"
Double Bass

3

103 *poco rall.*
pizz.
p

109 *Molto andante*
pp

114

119 *poco riten.* *a tempo*
arco *pizz.*

124

129 *Allegro*
arco *ppp* *morendo* *f*

135

140 *Allegretto*
pp

151

157 *sfzpp* *pp* *f*

"Rigoletto"
Double Bass

164



171



177



183



188



194



201

