

RECEIVED
JAN 10 1964
U.S. DEPARTMENT OF AGRICULTURE
WASHINGTON, D.C.

Joh. Seb. Bach, BWV 10

Vivace

1

3

10

15

18

23

28

33

38

43

47

SOLO

A

p

Tutti!

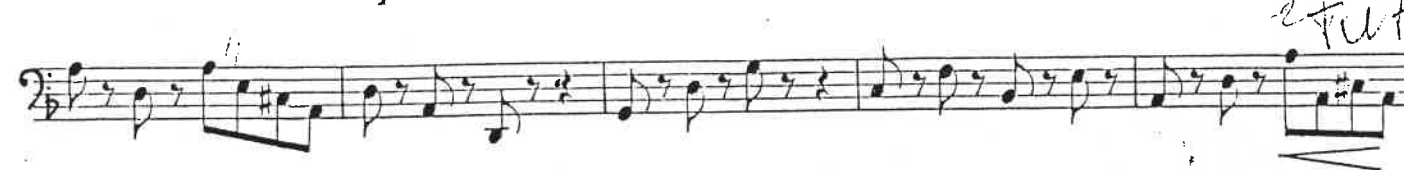
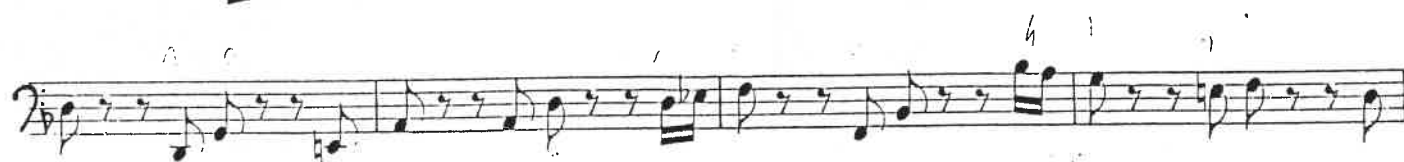
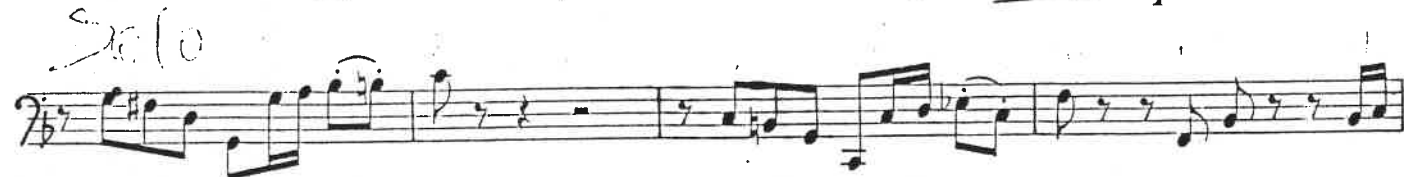
SOLO

Tutti!

B

SOLO

Violoncello u. Kontrabaß



9

12

15

A

f *pp*

18

segue

22

segue

26

cresc.

30

B

segue

mf

34

p

38

cresc.

segue

41

p

44

47

pp

f

Allegro

Solo *f*

mf *cresc.* *mf* *Tutti*

A *p*

33 *cresc.* *f* *Tutti*

40 *ff* *f*

46 *B* *p* *Tutti*

53

60 *f* *Tutti*

67 *f* *c* *Solo*

Violoncello u. Kontrabaß

5

Handwritten musical score for 'Tutti' in B-flat major, Op. 10, No. 1 by Franz Liszt. The score is for a single melodic line in bass clef, spanning 49 measures. It features various dynamic markings (p, f, mf, ff, cresc.) and articulation (accents, slurs). The piece is in 2/4 time and ends with a repeat sign.